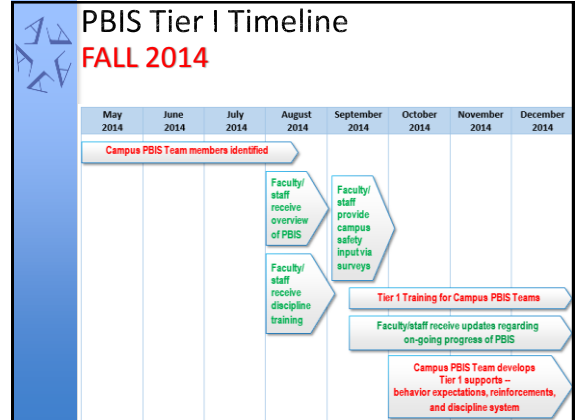
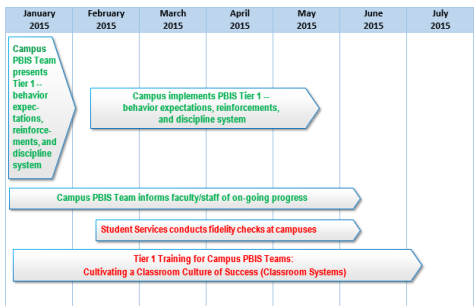


Building capacity for CWPBIS in a large, urban school district

Diane Myers, PhD
 Eric Zeissig, M.Ed., BCBA
 Kelly Hastings, M.Ed.
 Angela Hernandez, M.A.
 Cheryl Boyland, LPC-S, NCC
 Jeanne Muldrew, M.A.



PBIS Tier I Timeline SPRING 2015



PBIS Action List

- Contains action items to be completed during each 6-week grading period.
- Sent from Student Services to campus contact and principal via First Class Conference.

Lessons Learned

- Communicate with all stakeholders
- Collaboration is key
- Guidelines to accomplishing our work:
 - Begin with the end in mind
 - "What does it look like? What does it sound like?"
 - "Is it simple? Is it sustainable?"
- Always obtain feedback and adjust timelines accordingly

EBP in classroom management:

What all instructors should be doing in the classroom

1. Maximize structure
2. Identify, define, and teach expectations
3. Increase academic engagement
4. Establish a continuum of supports to encourage appropriate behavior
5. Establish a continuum of supports to discourage inappropriate behavior

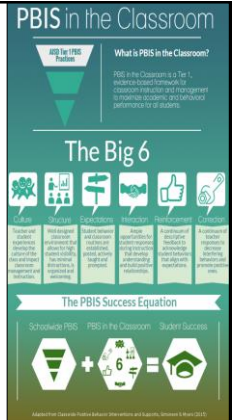
Simonsen et al., 2008

AISD made CWPBIS their own

- Important that any PBIS implementation be culturally and contextually appropriate
- After an initial rollout of the content in January 2015, AISD personnel decided to focus on culture first based on feedback and current issues within the district.
- Training was modified and a plan was born!

First: AISD's "Big Six"

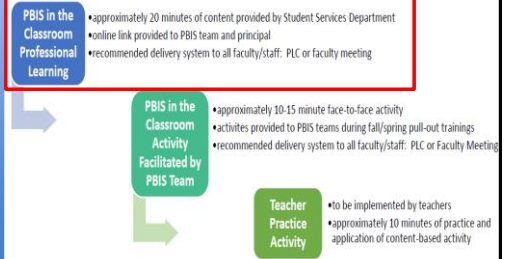
- Culture
 - Structure
 - Expectations
 - Interaction
 - Reinforcement
 - Correction
- They also wanted training in behavior basics and data collection.



The training

- Demo schools: direct training from Diane (1.5 days)
 - Elementary school
 - Middle school
 - High school (ninth grade only)
- District-wide:
 - All PBIS teams attended trainings (three separate trainings, .5 day total)
 - Diane did first and third (behavior basics, culture, structure; reinforcement, correction, data collection), AISD did middle (expectations and interaction)
 - Modules were created for each of the "Big Six" as well as behavioral basics and data collection

PBIS in the Classroom: 2015-2016 Campus Professional Learning



2015-2016 Campus Professional Learning: Content, Timeframe, Participants

	First 6 weeks		Second 6 weeks		Third 6 weeks		Fourth 6 weeks	
	Foundation	Component 1	Component 2	Component 3	Component 4	Component 5	Component 6	Foundation
Online Content Modules	Behavior Basics	Culture + Relationships	Structure	Expectations	Interaction (academic engagement)	Reinforcement	Correction	Data
PBIS Team-Facilitated Activity	ABC scenario	Culture map Relationship-building activity	Behavior matrix	Teaching timeline/plan	Task dimension scenarios	Reinforcement system	Classroom flow chart	Data collection activity
Teacher Practice Activity	Completed ABC flowchart	Completed culture map	Completed behavior matrix	Teaching timeline/plan	Task dimension scenarios	Reinforcement system	Classroom flow chart	Data collection activity

• All AISD classrooms should have classroom behavior matrices posted and taught to students NO later than January 2016.

Thank you!

- Please let us know if you have any additional questions or if we can help in any way.
- Diane: dmyers1@twu.edu
- Eric: ezeissig@aisd.net
- Thanks again and enjoy the conference! 😊